

tessuto - fabric

# Antigua

PRESOTTO

**NOME:**  
**CATEGORIA:**

**ANTIGUA**  
**F**

**CARATTERISTICHE TECNICHE:**

Composizione:	60% LI, 40% VI
Altezza:	140 cm
Peso:	770 gr/ml
Resistenza all'abrasione (Martindale):	20.000 cicli (UNI EN ISO 12947/2)
Resistenza al pilling:	4/5 (UNI EN ISO 12945/2)
Solidità dei colori alla luce:	4/5 (UNI EN ISO 105 B02)
Manutenzione:	



**NAME:**  
**CATEGORY:**

**ANTIGUA**  
**F**

**TECHNICAL CHARACTERISTIC:**

Composition:	60% LI, 40% VI
Width:	140 cm
Weight:	770 gr/ml
Abrasion resistance (Martindale):	20.000 rubs (UNI EN ISO 12947/2)
Pilling:	4/5 (UNI EN ISO 12945/2)
Colour fastness to light:	4/5 (UNI EN ISO 105 B02)
Care:	



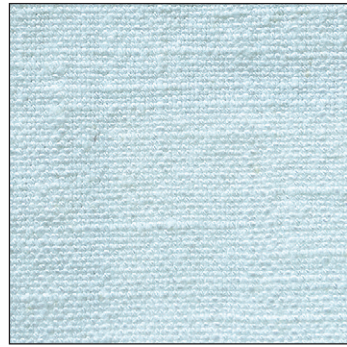
LCP136



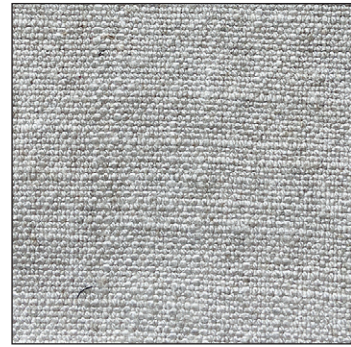
Alba 22 Srl - Società Unipersonale  
Via Puja n. 7 - Frazione Maron, 33070 BRUGNERA (PN) - Italy  
t. +39 0434 618111 - offices@presotto.com - www.presotto.com

# Antigua

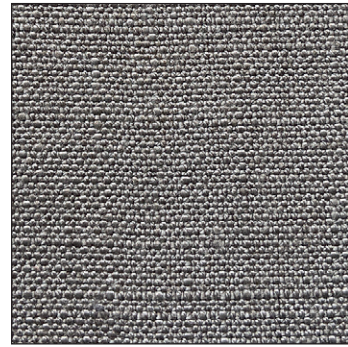
GLAMOUR



F/ATG01



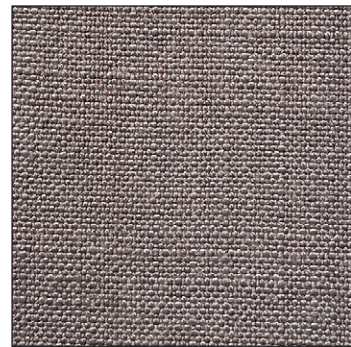
F/ATG03



F/ATG15



F/ATG18



F/ATG05

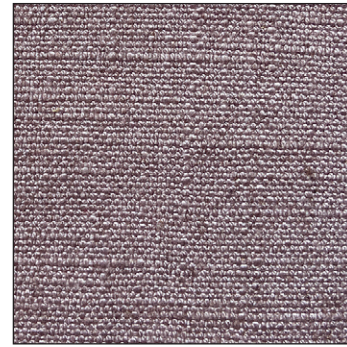


F/ATG12

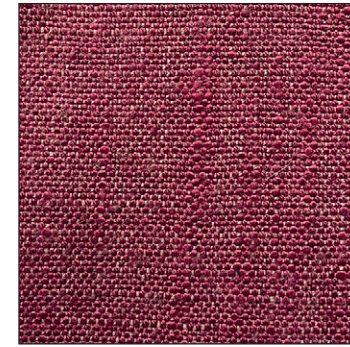


# Antigua

ROMANTIC

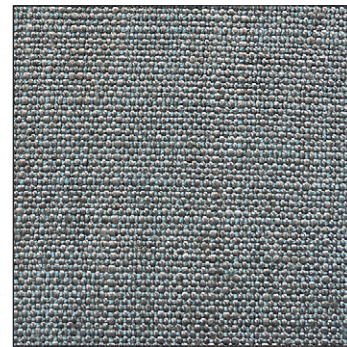


F/ATG06

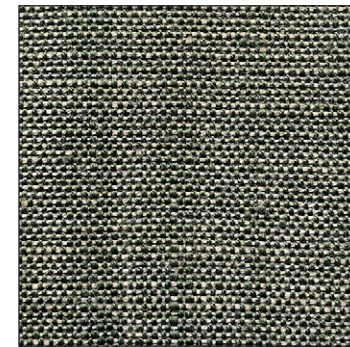


F/ATG24

NATURAL



F/ATG13

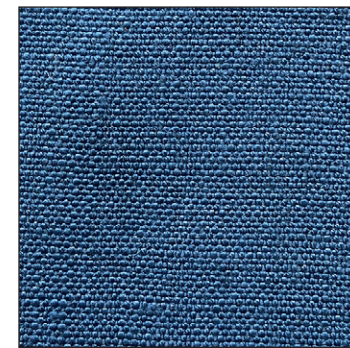


F/ATG30

HARMONY



F/ATG08



F/ATG25



F/ATG17

ELEGANCE



F/ATG09



F/ATG16