

tessuto - fabric

Blues



Idrorepellente - Water repellent

PRESOTTO

NOME:
CATEGORIA:

BLUES
F

CARATTERISTICHE TECNICHE:

Composizione: 100% PL
Altezza: 140 cm +/- 2%
Peso: 450 gr/mq
Resistenza all'abrasione (Martindale): 40.000 cicli (UNI EN ISO 12947/2)
Resistenza al pilling: 4 (UNI EN ISO 12945/2)
Solidità dei colori alla luce: 4 (UNI EN ISO 105 B02)
Solidità dei colori allo sfregamento: Umido: 3, Secco: 4 (UNI EN ISO 105-X12)
Omologazioni: DIN EN 1021-1
BS 5852 Source 0

Manutenzione:



NAME:
CATEGORY:

BLUES
F

TECHNICAL CHARACTERISTIC:

Composition: 100% PL
Width: 140 cm +/- 2%
Weight: 450 gr/mq
Abrasion resistance (Martindale): 40.000 cicli (UNI EN ISO 12947/2)
Pilling: 4 (UNI EN ISO 12945/2)
Colour fastness to light: 4 (UNI EN ISO 105 B02)
Colour fastness to rubbing: Wet: 3, Dry: 4 (UNI EN ISO 105-X12)
Flammability: DIN EN 1021-1
BS 5852 Source 0

Care:



LCP141



Alba 22 Srl - Società Unipersonale
Via Puja n. 7 - Frazione Maron, 33070 BRUGNERA (PN) - Italy
t. +39 0434 618111 - offices@presotto.com - www.presotto.com

Blues

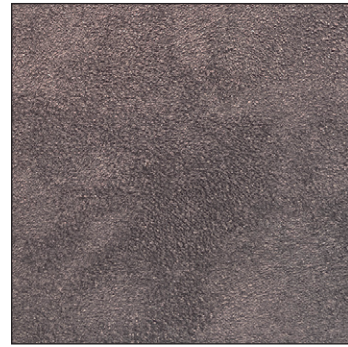
GLAMOUR



F/BLS301



F/BLS314



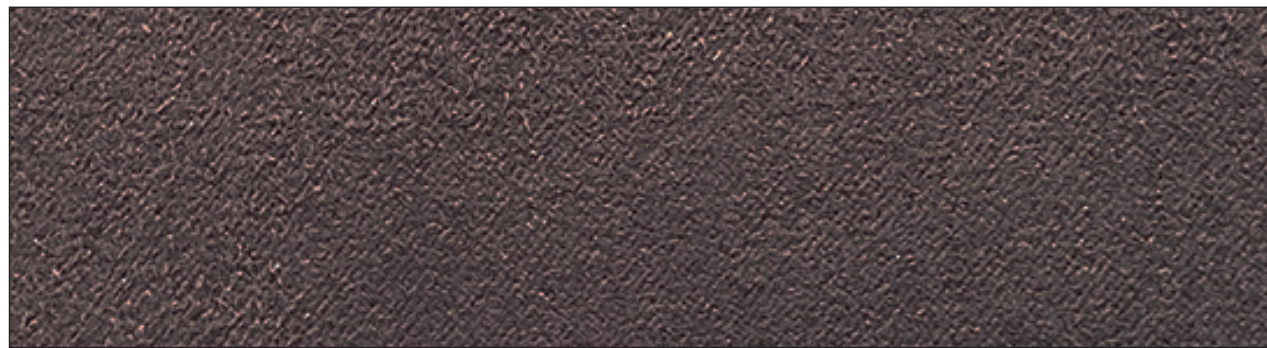
F/BLS3144



F/BLS354



F/BLS374



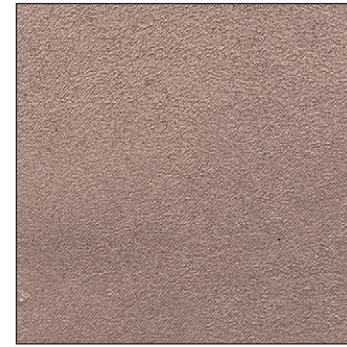
ENERGY



F/BLS349

Blues

ROMANTIC



F/BLS344



F/BLS373

NATURAL



F/BLS324



F/BLS348

HARMONY



F/BLS307



F/BLS347

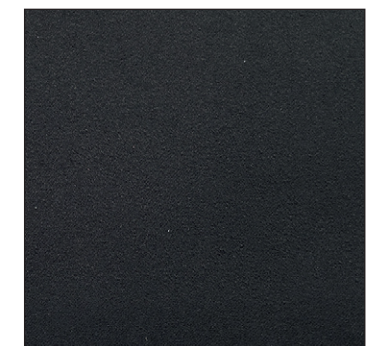
ELEGANCE



F/BLS326



F/BLS366



F/BLS302