

tessuto - fabric

# Drop



Resistenza al fuoco - Fire resistance  
USA

## PRESOTTO

**NOME:**  
**CATEGORIA:**

**DROP**  
**F**

**CARATTERISTICHE TECNICHE:**

Composizione:	59% CO, 41% PL
Altezza:	140 cm +/- 3%
Peso:	700 gr/ml +/- 8%
Resistenza all'abrasione (Martindale):	25.000 cicli (UNI EN ISO 12947/2)
Resistenza al pilling:	4 (UNI EN ISO 12945/2)
Solidità dei colori alla luce:	4/5 (UNI EN ISO 105 B02)
Solidità dei colori allo sfregamento:	Umido: 3/4, Secco: 4/5 (UNI EN ISO 105-X12)
Omologazioni:	CA TB 117:2013
Manutenzione:	



**NAME:**  
**CATEGORY:**

**DROP**  
**F**

**TECHNICAL CHARACTERISTIC:**

Composition:	59% CO, 41% PL
Width:	140 cm +/- 3%
Weight:	700 gr/ml +/- 8%
Abrasion resistance (Martindale):	25.000 cicli (UNI EN ISO 12947/2)
Pilling:	4 (UNI EN ISO 12945/2)
Colour fastness to light:	4/5 (UNI EN ISO 105 B02)
Colour fastness to rubbing:	Wet: 3/4, Dry: 4/5 (UNI EN ISO 105-X12)
Flammability:	CA TB 117:2013
Care:	



LCP137

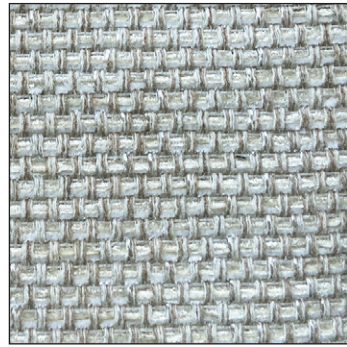


Alba 22 Srl - Società Unipersonale  
Via Puja n. 7 - Frazione Maron, 33070 BRUGNERA (PN) - Italy  
t. +39 0434 618111 - offices@presotto.com - www.presotto.com

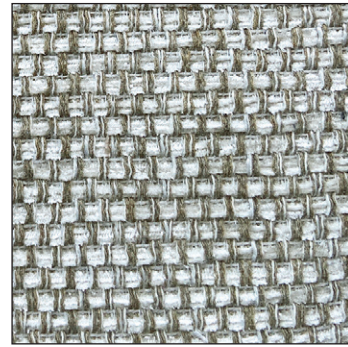


Drop

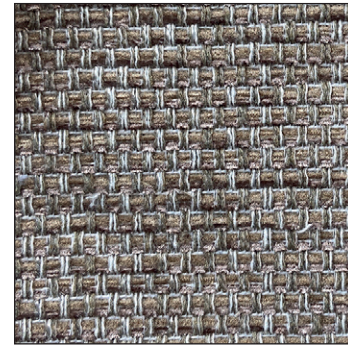
GLAMOUR



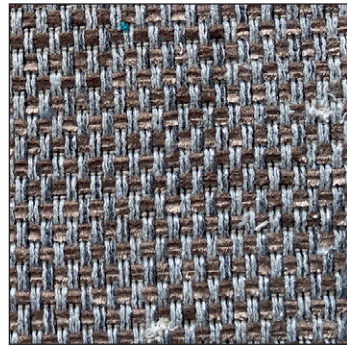
F/DRP03



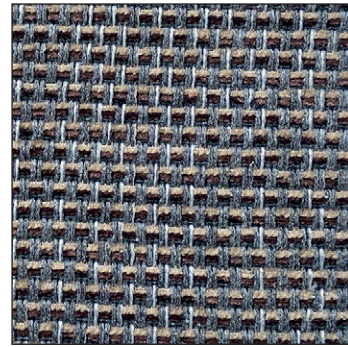
F/DRP06



F/DRP07



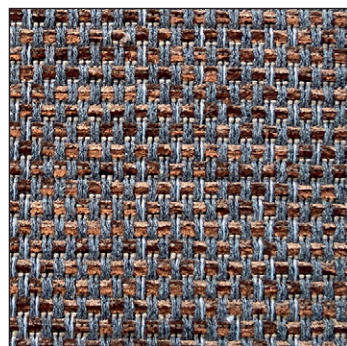
F/DRP01



F/DRP35



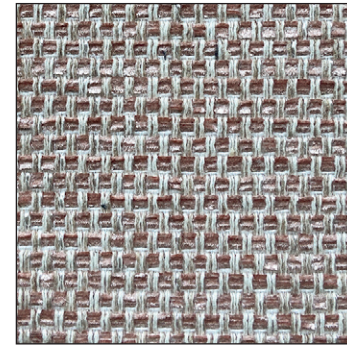
ENERGY



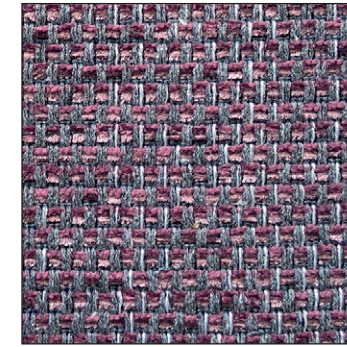
F/DRP33

Drop

ROMANTIC

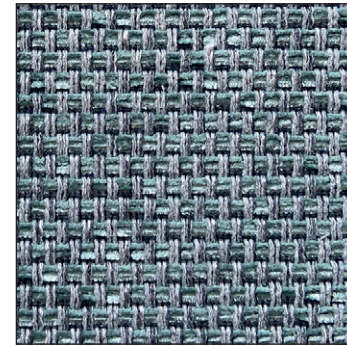


F/DRP05

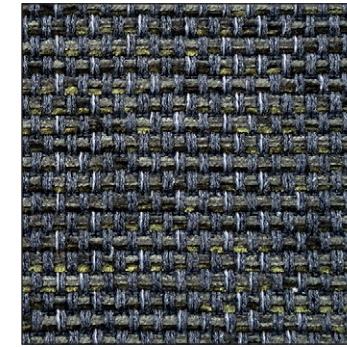


F/DRP31

NATURAL

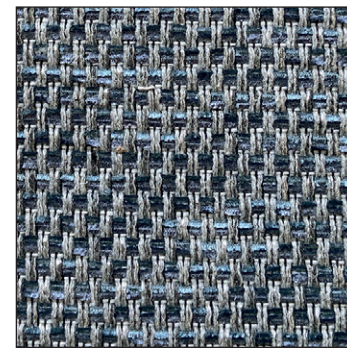


F/DRP20

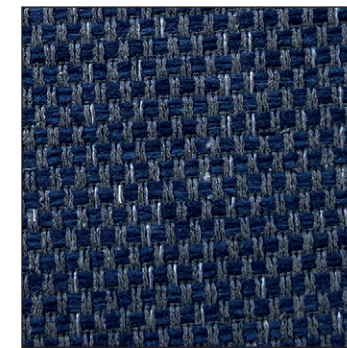


F/DRP30

HARMONY

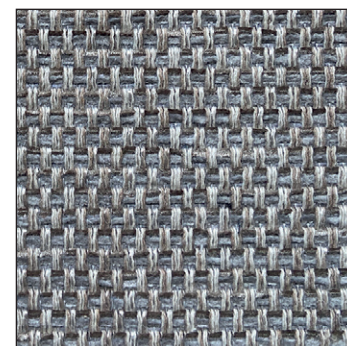


F/DRP17

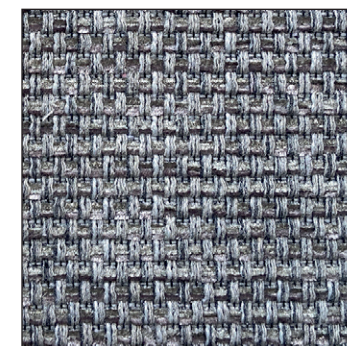


F/DRP37

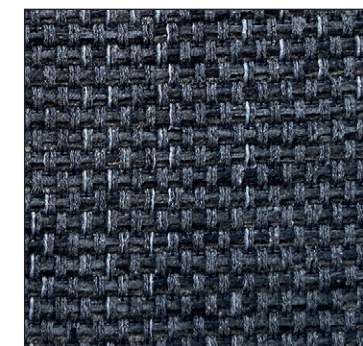
ELEGANCE



F/DRP11



F/DRP15



F/DRP27