

tessuto - fabric

Mimi



Resistenza al fuoco - Fire resistance
USA

PRESOTTO

NOME:
CATEGORIA:

MIMI
F

CARATTERISTICHE TECNICHE:

Composizione:	57% CO, 29% PC, 14% PL
Altezza:	140 cm
Peso:	800 gr/ml
Resistenza all'abrasione (Martindale):	40.000 cicli (UNI EN ISO 12947/2)
Resistenza al pilling:	4 (UNI EN ISO 12945/2)
Solidità dei colori alla luce:	5 (UNI EN ISO 105 B02)
Solidità dei colori allo sfregamento:	Umido: 4, Secco: 4/5 (UNI EN ISO 105-X12)
Omologazioni:	CA TB 117
Manutenzione:	



NAME:
CATEGORY:

MIMI
F

TECHNICAL CHARACTERISTIC:

Composition:	57% CO, 29% PC, 14% PL
Width:	140 cm
Weight:	800 gr/ml
Abrasion resistance (Martindale):	40.000 rubs (UNI EN ISO 12947/2)
Pilling:	4 (UNI EN ISO 12945/2)
Colour fastness to light:	5 (UNI EN ISO 105 B02)
Colour fastness to rubbing:	wet: 4, Dry: 4/5 (UNI EN ISO 105-X12)
Flammability:	CA TB 117
Care:	



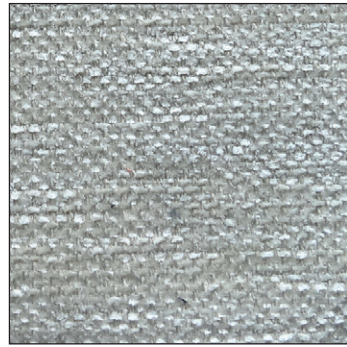
LCP135



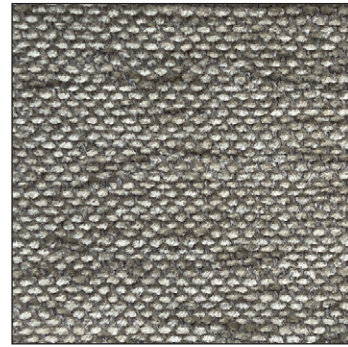
Alba 22 Srl - Società Unipersonale
Via Puja n. 7 - Frazione Maron, 33070 BRUGNERA (PN) - Italy
t. +39 0434 618111 - offices@presotto.com - www.presotto.com

Mimi

GLAMOUR



F/MM3002



F/MM3003



F/MM3004



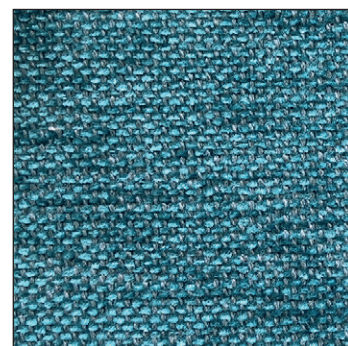
F/MM3006



F/MM3008



F/MM3015

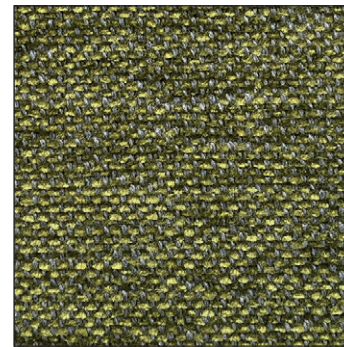


F/MM3027

ENERGY

Mimi

NATURAL

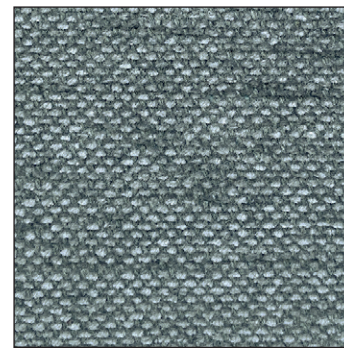


F/MM3024

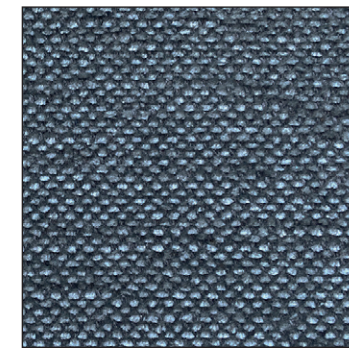


F/MM3023

HARMONY



F/MM3017

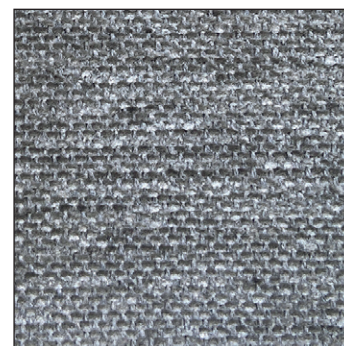


F/MM3032



F/MM3034

ELEGANCE



F/MM3037



F/MM3038



F/MM3041