

tessuto - fabric

Tindari

PRESOTTO

NOME:
CATEGORIA:

TINDARI
F

CARATTERISTICHE TECNICHE:

Composizione:	52% CO, 47% PC, 1% PL
Altezza:	140 cm
Peso:	860 gr/ml
Resistenza all'abrasione (Martindale):	40.000 cicli (UNI EN ISO 12947/2)
Resistenza al pilling:	4 (UNI EN ISO 12945/2)
Solidità dei colori alla luce:	4/5 (UNI EN ISO 105 B02)
Solidità dei colori allo sfregamento:	Umido: 3, Secco: 3/4 (UNI EN ISO 105-X12)
Manutenzione:	



NAME:
CATEGORY:

TINDARI
F

TECHNICAL CHARACTERISTIC:

Composition:	52% CO, 47% PC, 1% PL
Width:	140 cm
Weight:	860 gr/ml
Abrasion resistance (Martindale):	40.000 cicli (UNI EN ISO 12947/2)
Pilling:	4 (UNI EN ISO 12945/2)
Colour fastness to light:	4/5 (UNI EN ISO 105 B02)
Colour fastness to rubbing:	Wet: 3, Dry: 3/4 (UNI EN ISO 105-X12)
Care:	



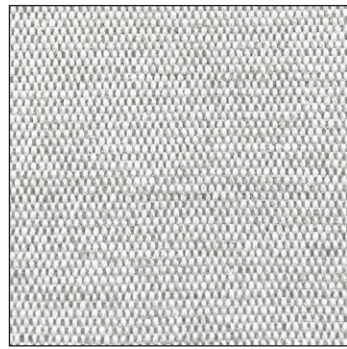
LCP134



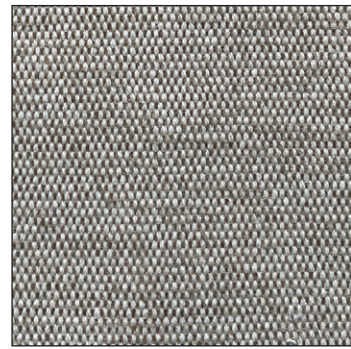
Alba 22 Srl - Società Unipersonale
Via Puja n. 7 - Frazione Maron, 33070 BRUGNERA (PN) - Italy
t. +39 0434 618111 - offices@presotto.com - www.presotto.com

Tindari

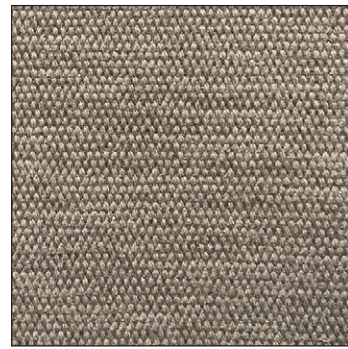
GLAMOUR



F/TND01



F/TND69



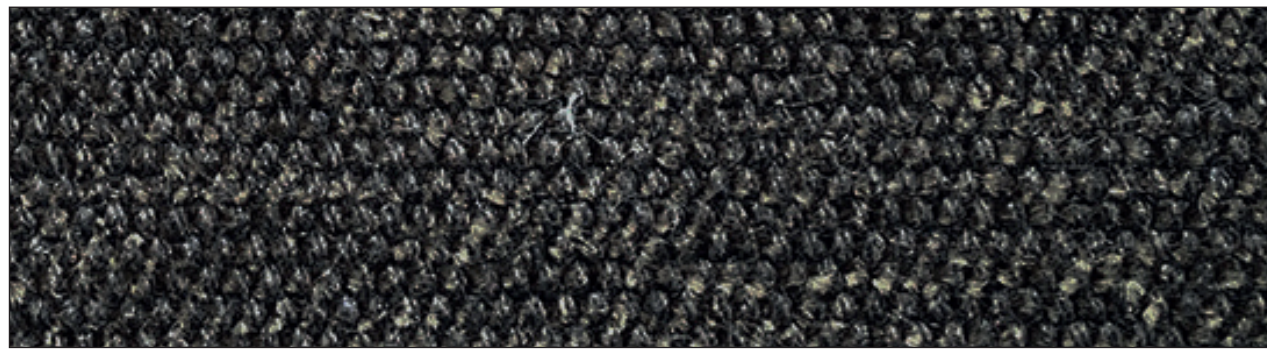
F/TND32



F/TND70



F/TND67



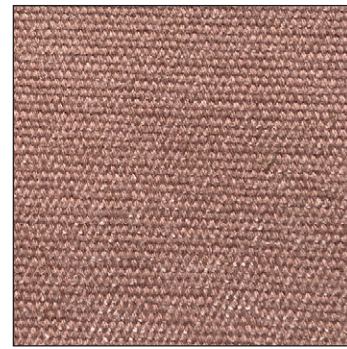
ENERGY



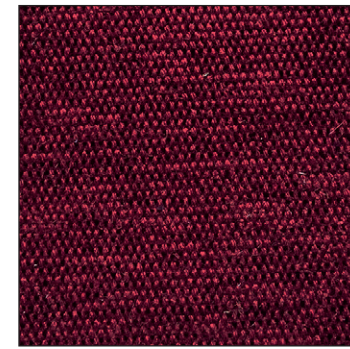
F/TND34

Tindari

ROMANTIC

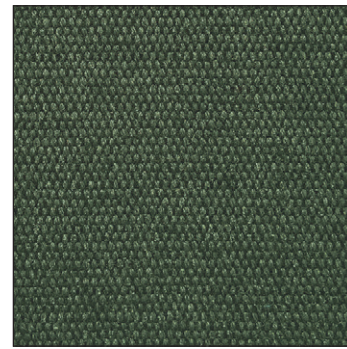


F/TND72

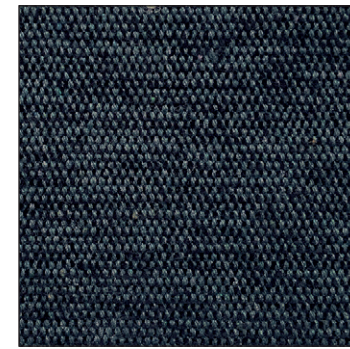


F/TND65

NATURAL

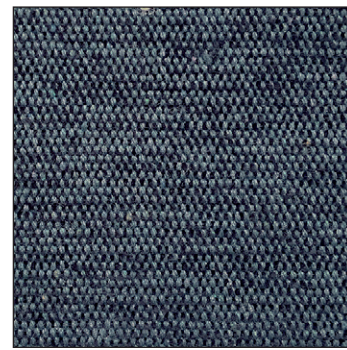


F/TND61

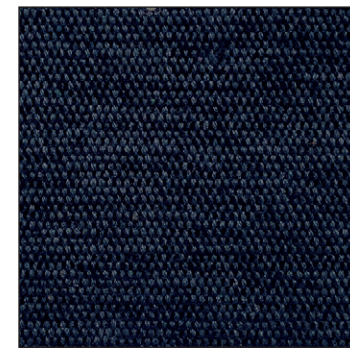


F/TND73

HARMONY

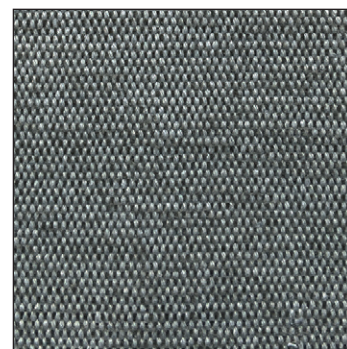


F/TND26



F/TND75

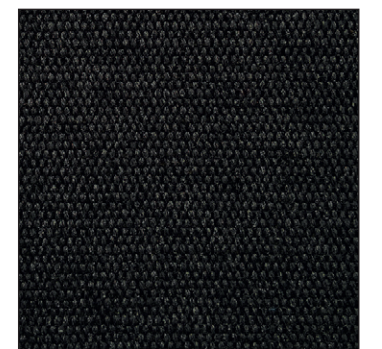
ELEGANCE



F/TND53



F/TND76



F/TND27