

tessuto - fabric

Allure Match



Resistenza al fuoco - Fire resistance
UK

PRESOTTO

NOME:
CATEGORIA:

ALLURE MATCH
G

CARATTERISTICHE TECNICHE:

Composizione:	69% VI, 31% LI
Altezza:	140 cm +/- 3%
Peso:	621 gr/ml +/- 8%
Resistenza all'abrasione (Martindale):	25.000 cicli (UNI EN ISO 12947/2)
Resistenza al pilling:	3/4 (UNI EN ISO 12945/2)
Solidità dei colori alla luce:	4 (UNI EN ISO 105 B02)
Solidità dei colori allo sfregamento:	Umido: 3, Secco: 4/5 (UNI EN ISO 105-X12)
Omologazioni:	BS 5852-1:1979
Manutenzione:	



NAME:
CATEGORY:

ALLURE MATCH
G

TECHNICAL CHARACTERISTIC:

Composition:	69% VI, 31% LI
Width:	140 cm +/- 3%
Weight:	621 gr/ml +/- 8%
Abrasion resistance (Martindale):	25.000 cicli (UNI EN ISO 12947/2)
Pilling:	3/4 (UNI EN ISO 12945/2)
Colour fastness to light:	4 (UNI EN ISO 105 B02)
Colour fastness to rubbing:	Wet: 3, Dry: 4/5 (UNI EN ISO 105-X12)
Flammability:	BS 5852-1:1979
Care:	



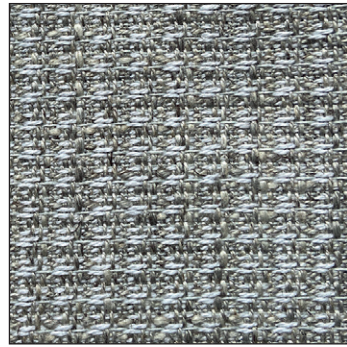
LCP143



Alba 22 Srl - Società Unipersonale
Via Puja n. 7 - Frazione Maron, 33070 BRUGNERA (PN) - Italy
t. +39 0434 618111 - offices@presotto.com - www.presotto.com

Allure match

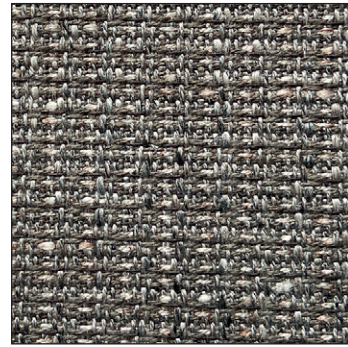
GLAMOUR



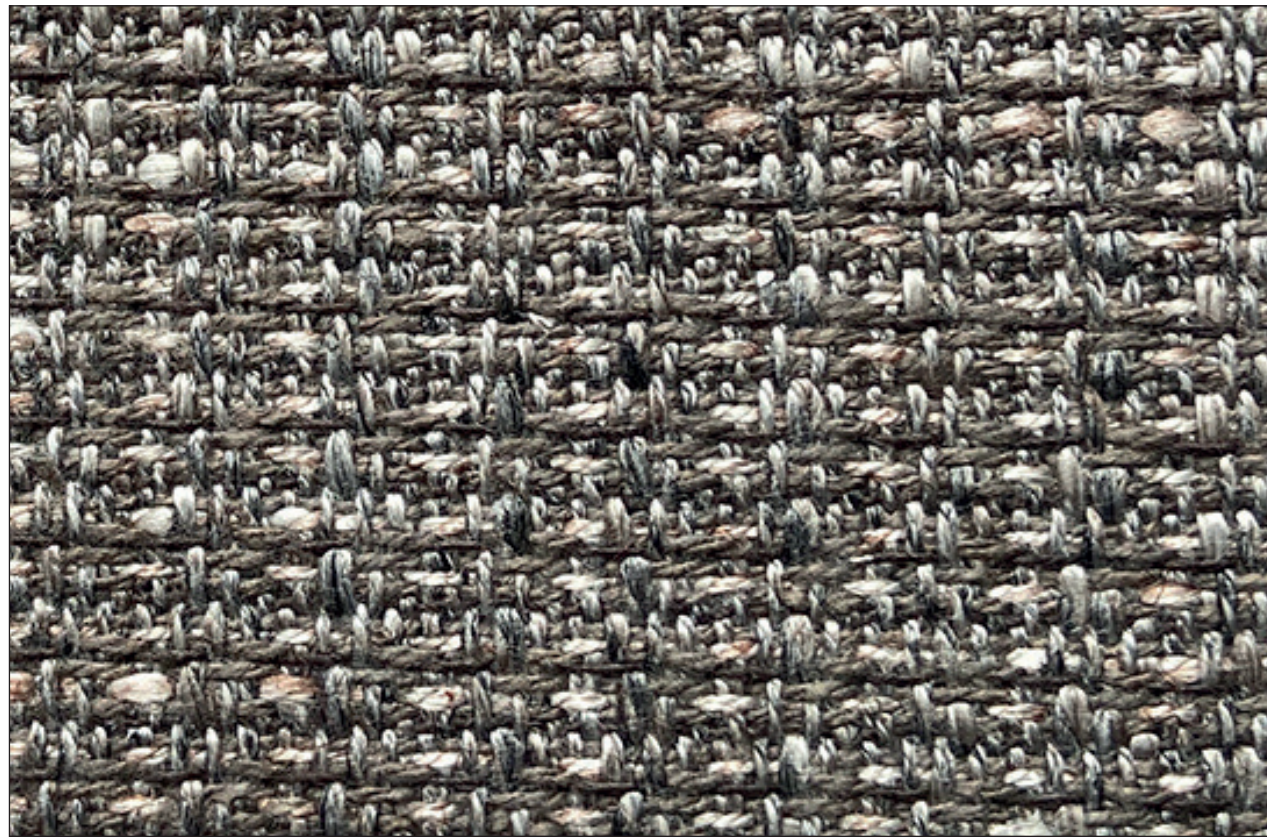
G/ALM101



G/ALM055

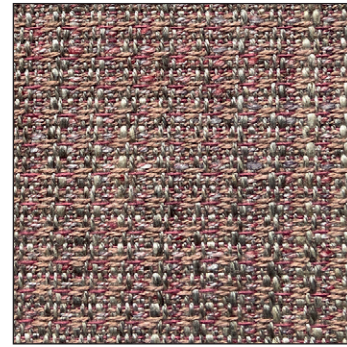


G/ALM028

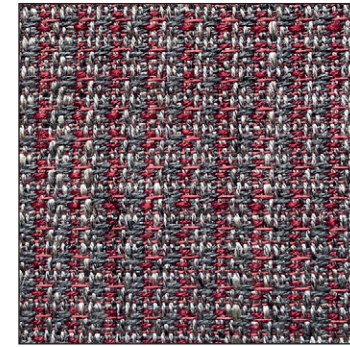


Allure match

ROMANTIC

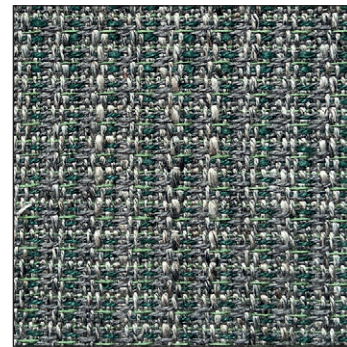


G/ALM206



G/ALM105

NATURAL

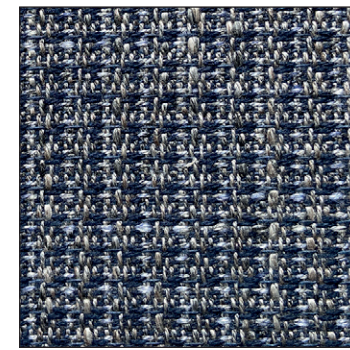


G/ALM108

HARMONY

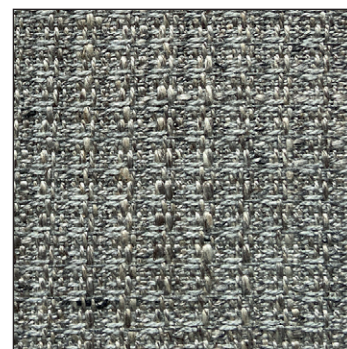


G/ALM051

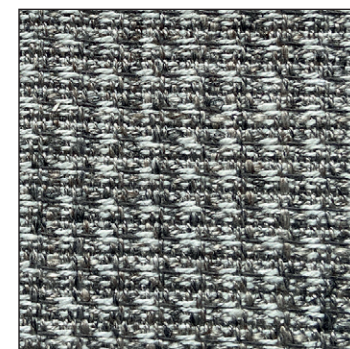


G/ALM106

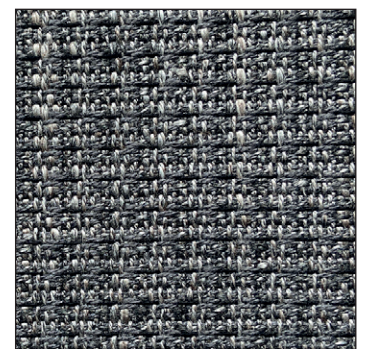
ELEGANCE



G/ALM024

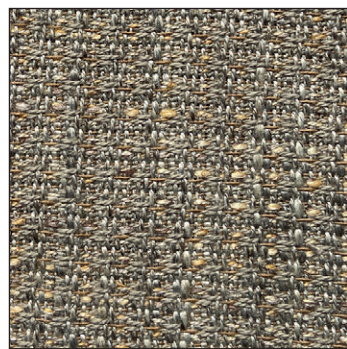


G/ALM001

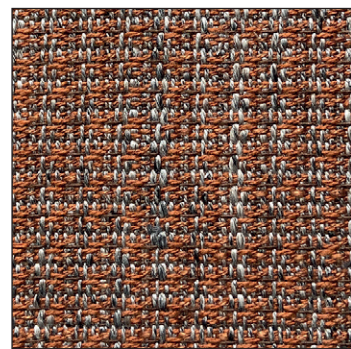


G/ALM100

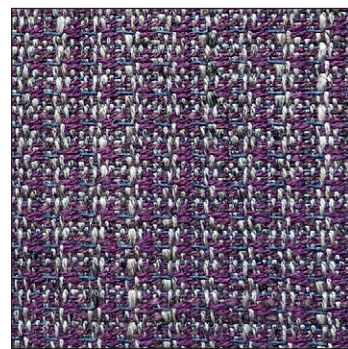
ENERGY



G/ALM018



G/ALM104



G/ALM107