

tessuto - fabric

Allure Plain



Resistenza al fuoco - Fire resistance
UK

PRESOTTO

NOME:
CATEGORIA:

ALLURE PLAIN
G

CARATTERISTICHE TECNICHE:

Composizione:	53% VI, 23% LI, 17% CO, 4% PL, 3% PC
Altezza:	140 cm +/- 3%
Peso:	650 gr/ml +/- 5%
Resistenza all'abrasione (Martindale):	30.000 cicli (UNI EN ISO 12947/2)
Resistenza al pilling:	3/4 (UNI EN ISO 12945/2)
Solidità dei colori alla luce:	4/5 (UNI EN ISO 105 B02)
Solidità dei colori allo sfregamento:	Umido: 3, Secco: 4/5 (UNI EN ISO 105-X12)
Omologazioni:	BS 5852-1:1979
Manutenzione:	



NAME:
CATEGORY:

ALLURE PLAIN
G

TECHNICAL CHARACTERISTIC:

Composition:	53% VI, 23% LI, 17% CO, 4% PL, 3% PC
Width:	140 cm +/- 3%
Weight:	650 gr/ml +/- 5%
Abrasion resistance (Martindale):	30.000 rubs (UNI EN ISO 12947/2)
Pilling:	3/4 (UNI EN ISO 12945/2)
Colour fastness to light:	4/5 (UNI EN ISO 105 B02)
Colour fastness to rubbing:	Wet: 3, Dry: 4/5 (UNI EN ISO 105-X12)
Flammability:	BS 5852-1:1979
Care:	



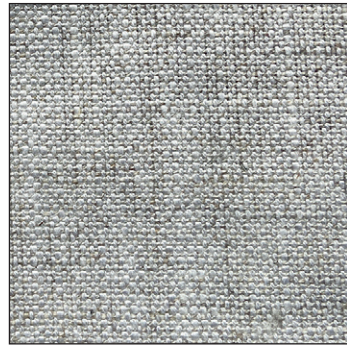
LCP142



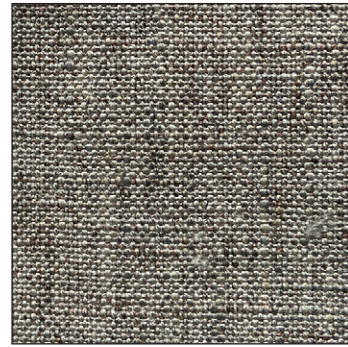
Alba 22 Srl - Società Unipersonale
Via Puja n. 7 - Frazione Maron, 33070 BRUGNERA (PN) - Italy
t. +39 0434 618111 - offices@presotto.com - www.presotto.com

Allure plain

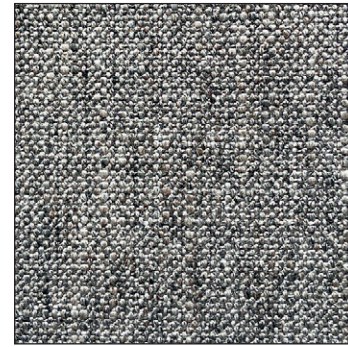
GLAMOUR



G/ALP099



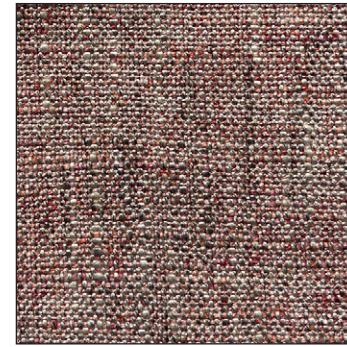
G/ALP006



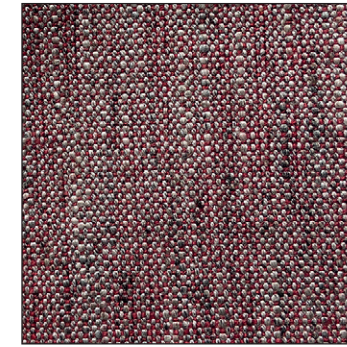
G/ALP037

Allure plain

ROMANTIC



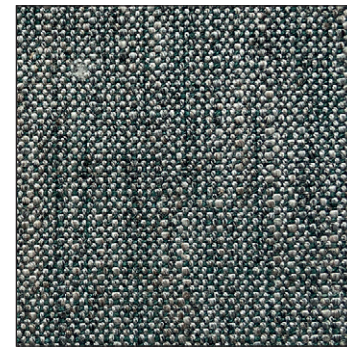
G/ALP206



G/ALP105

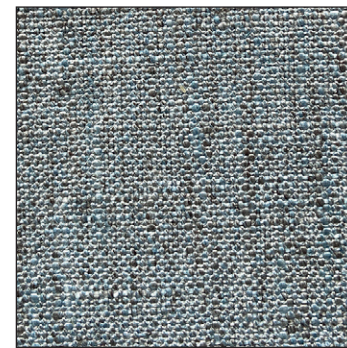


NATURAL



G/ALP108

HARMONY



G/ALP011



G/ALP106

ENERGY



G/ALP024



G/ALP104



G/ALP107

ELEGANCE



G/ALP003



G/ALP001



G/ALP100