

tessuto - fabric

Carrera

PRESOTTO

NOME:
CATEGORIA:

CARRERA
G

CARATTERISTICHE TECNICHE:

Composizione:	56% CO, 31% VI, 10% LI, 3% PA
Altezza:	140 cm
Peso:	800 gr/mq
Resistenza all'abrasione (Martindale):	20.000 cicli (UNI EN ISO 12947/2)
Resistenza al pilling:	4/5 (UNI EN ISO 12945/2)
Solidità dei colori alla luce:	4/5 (UNI EN ISO 105 B02)
Solidità dei colori allo sfregamento:	Umido: 3, Secco: 4 (UNI EN ISO 105-X12)
Omologazioni:	BS 5858 Cigarette
Manutenzione:	



NAME:
CATEGORY:

CARRERA
G

TECHNICAL CHARACTERISTIC:

Composition:	56% CO, 31% VI, 10% LI, 3% PA
Width:	140 cm
Weight:	800 gr/mq
Abrasion resistance (Martindale):	20.000 rubs (UNI EN ISO 12947/2)
Pilling:	4/5 (UNI EN ISO 12945/2)
Colour fastness to light:	4/5 (UNI EN ISO 105 B02)
Colour fastness to rubbing:	Wet: 3, Dry: 4 (UNI EN ISO 105-X12)
Flammability:	BS 5858 Cigarette
Care:	



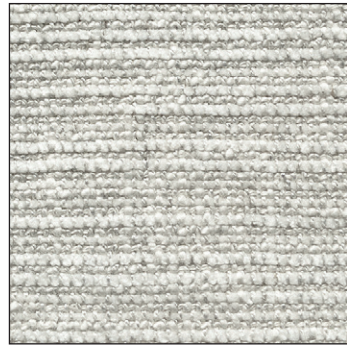
LCP144



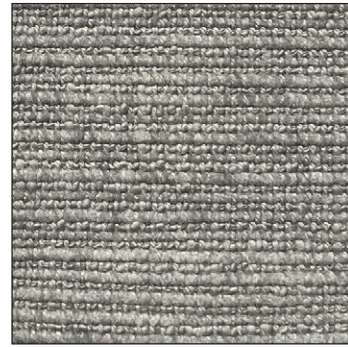
Alba 22 Srl - Società Unipersonale
Via Puja n. 7 - Frazione Maron, 33070 BRUGNERA (PN) - Italy
t. +39 0434 618111 - offices@presotto.com - www.presotto.com

Carrera

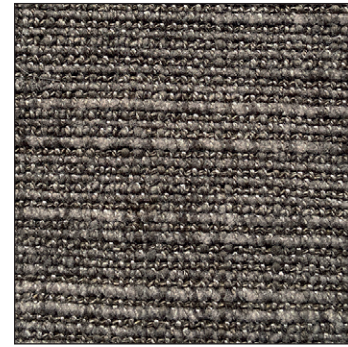
GLAMOUR



G/CRA14



G/CRA01

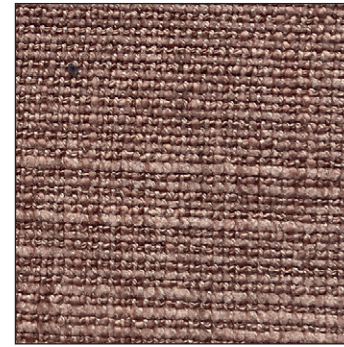


G/CRA05

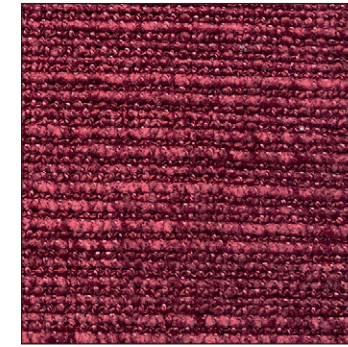


Carrera

ROMANTIC

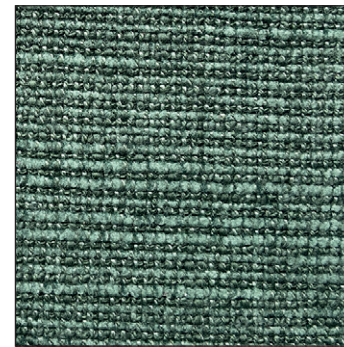


G/CRA11

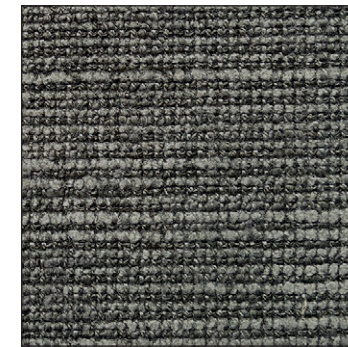


G/CRA07

NATURAL

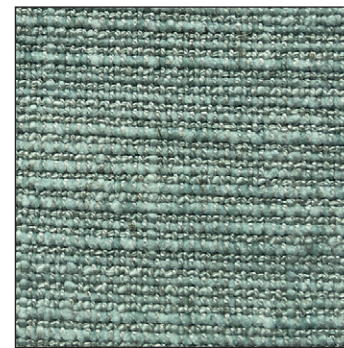


G/CRA10

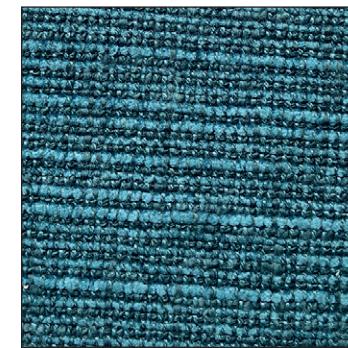


G/CRA03

HARMONY



G/CRA04



G/CRA12

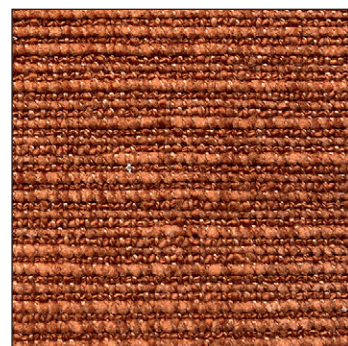


G/CRA06

ENERGY



G/CRA02

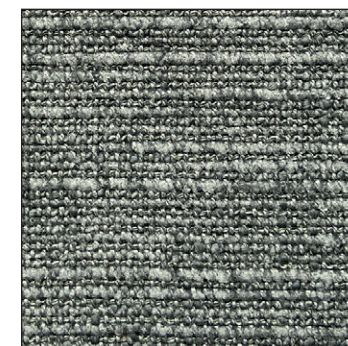


G/CRA09

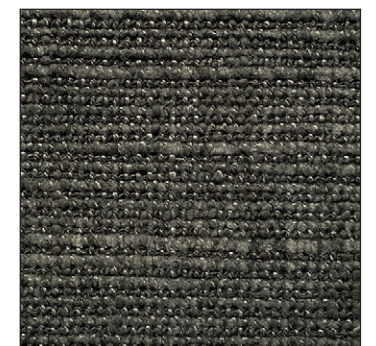
ELEGANCE



G/CRA15



G/CRA17



G/CRA16