

tessuto - fabric

# Sancho



Resistenza al fuoco - Fire resistance  
USA

PRESOTTO

**NOME:**  
**CATEGORIA:**

**SANCHO**  
**G**

**CARATTERISTICHE TECNICHE:**

Composizione:	52% PL, 33% PC, 8% WO, 7% VI
Altezza:	140 cm +/- 3%
Peso:	620 gr/ml +/- 8%
Resistenza all'abrasione (Martindale):	30.000 cicli (UNI EN ISO 12947/2)
Resistenza al pilling:	4/5 (UNI EN ISO 12945/2)
Solidità dei colori alla luce:	4/5 (UNI EN ISO 105 B02)
Solidità dei colori allo sfregamento:	3/4 (UNI EN ISO 105-X12)
Omologazioni:	BS 5852-1:1979 CA TB 117:2013

Manutenzione:



**NAME:**  
**CATEGORY:**

**SANCHO**  
**G**

**TECHNICAL CHARACTERISTIC:**

Composition:	52% PL, 33% PC, 8% WO, 7% VI
Width:	140 cm +/- 3%
Weight:	620 gr/ml +/- 8%
Abrasion resistance (Martindale):	30.000 rubs (UNI EN ISO 12947/2)
Pilling:	4/5 (UNI EN ISO 12945/2)
Colour fastness to light:	4/5 (UNI EN ISO 105 B02)
Colour fastness to rubbing:	3/4 (UNI EN ISO 105-X12)
Flammability:	BS 5852-1:1979 CA TB 117:2013

Care:



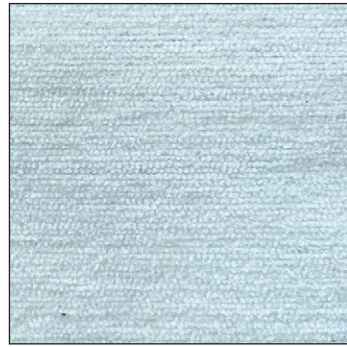
LCP149



Alba 22 Srl - Società Unipersonale  
Via Puja n. 7 - Frazione Maron, 33070 BRUGNERA (PN) - Italy  
t. +39 0434 618111 - offices@presotto.com - www.presotto.com

# Sancho

GLAMOUR



G/SNH01



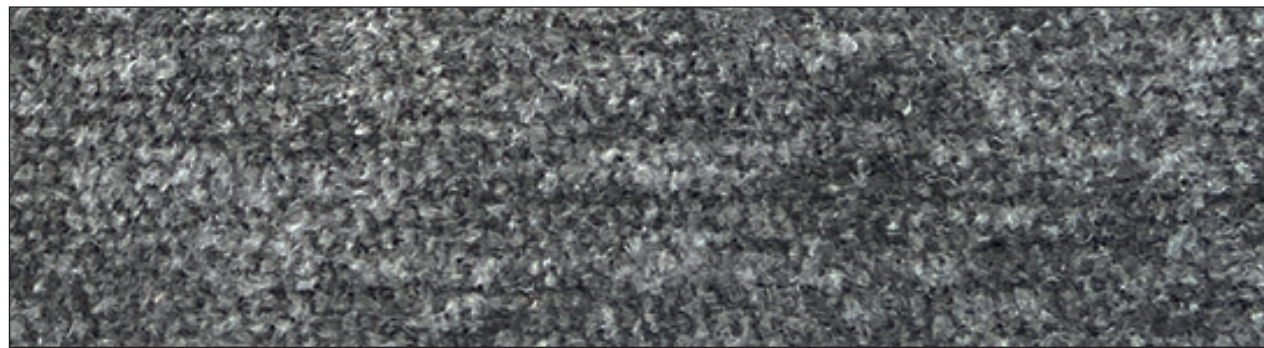
G/SNH25



G/SNH08



G/SNH29



# Sancho

ROMANTIC

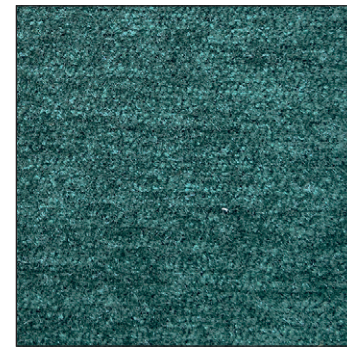


G/SNH33



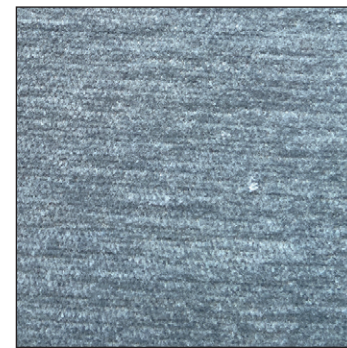
G/SNH18

NATURAL

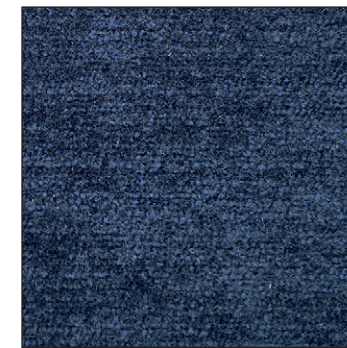


G/SNH04

HARMONY



G/SNH32



G/SNH11

ENERGY



G/SNH22



G/SNH20

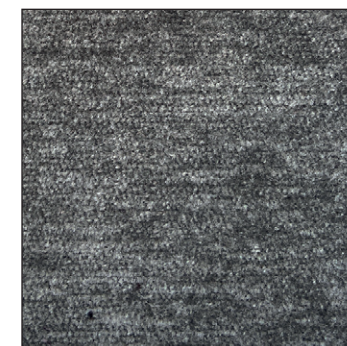


G/SNH17

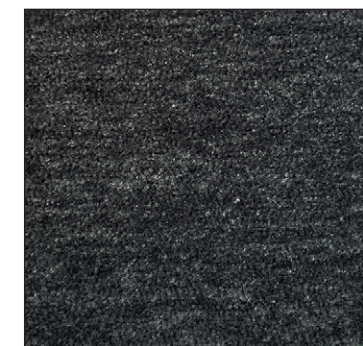
ELEGANCE



G/SNH05



G/SNH09



G/SNH10