

tessuto - fabric

Serra



Resistenza al fuoco - Fire resistance
USA

PRESOTTO

NOME:
CATEGORIA:

SERRA
G

CARATTERISTICHE TECNICHE:

Composizione:	80% PL, 20% CO
Altezza:	140 cm
Peso:	890 gr/ml
Resistenza all'abrasione (Martindale):	40.000 cicli (UNI EN ISO 12947/2)
Resistenza al pilling:	3/4 (UNI EN ISO 12945/2)
Solidità dei colori alla luce:	4/5 (UNI EN ISO 105 B02)
Solidità dei colori allo sfregamento:	Umido: 4/5, Secco: 4/5 (UNI EN ISO 105-X12)
Omologazioni:	BS 5852:1979 Part 0 CA TB 117

Manutenzione:



NAME:
CATEGORY:

SERRA
G

TECHNICAL CHARACTERISTIC:

Composition:	80% PL, 20% CO
Width:	140 cm
Weight:	890 gr/ml
Abrasion resistance (Martindale):	40.000 cicli (UNI EN ISO 12947/2)
Pilling:	3/4 (UNI EN ISO 12945/2)
Colour fastness to light:	4/5 (UNI EN ISO 105 B02)
Colour fastness to rubbing:	Wet: 4/5, Dry: 4/5 (UNI EN ISO 105-X12)
Flammability:	BS 5852:1979 Part 0 CA TB 117

Care:



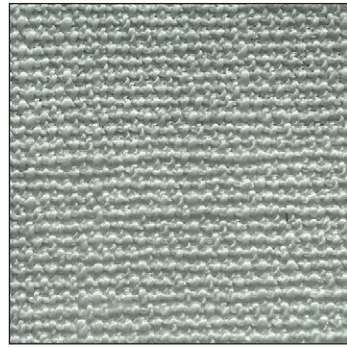
LCP147



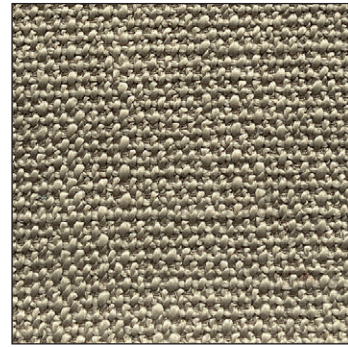
Alba 22 Srl - Società Unipersonale
Via Puja n. 7 - Frazione Maron, 33070 BRUGNERA (PN) - Italy
t. +39 0434 618111 - offices@presotto.com - www.presotto.com

Serra

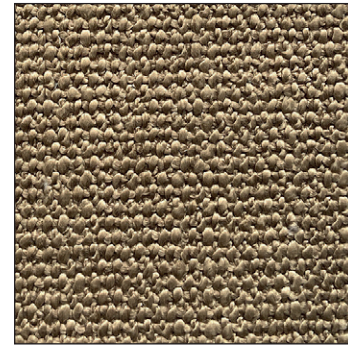
GLAMOUR



G/SRR01



G/SRR02

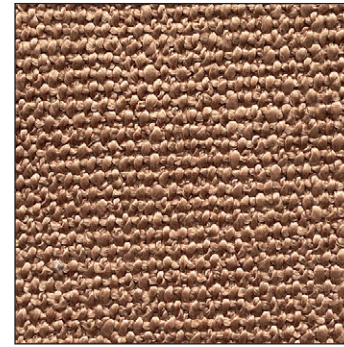


G/SRR05

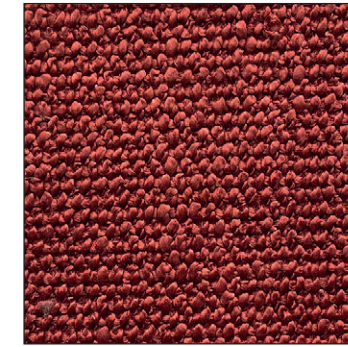


Serra

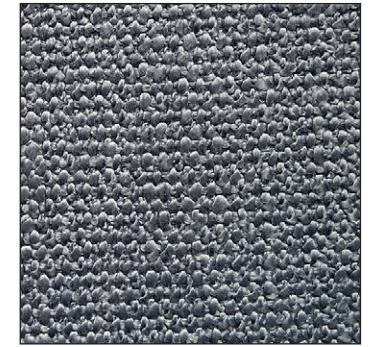
ROMANTIC



G/SRR04

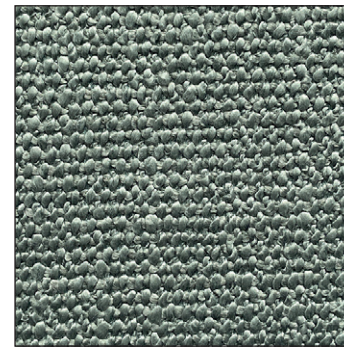


G/SRR08



G/SRR15

NATURAL

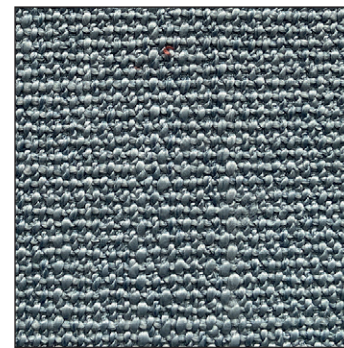


G/SRR11

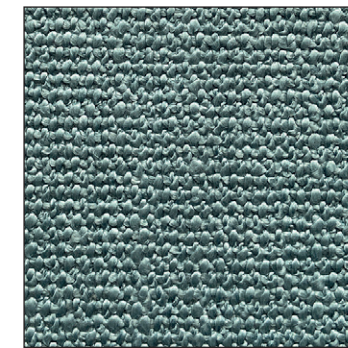


G/SRR06

HARMONY



G/SRR09



G/SRR10



G/SRR12

ELEGANCE



G/SRR15