

tessuto - fabric

Baltimora



Resistenza al fuoco - Fire resistance
UK, USA

PRESOTTO

NOME:
CATEGORIA:

BALTIMORA
L

CARATTERISTICHE TECNICHE:

Composizione:	50% PC, 23% LI, 19% CO, 8% NY
Altezza:	140 cm
Peso:	990 gr/ml
Resistenza all'abrasione (Martindale):	40.000 cicli (UNI EN ISO 12947/2)
Resistenza al pilling:	3/4 (UNI EN ISO 12945/2)
Solidità dei colori alla luce:	4/5 (UNI EN ISO 105 B02)
Solidità dei colori allo sfregamento:	Secco: 3/4, Umido: 3 (UNI EN ISO 105-X12)
Omologazioni:	BS 5852, CA TB 117
Manutenzione:	



NAME:
CATEGORY:

BALTIMORA
L

TECHNICAL CHARACTERISTIC:

Composition:	50% PC, 23% LI, 19% CO, 8% NY
Width:	140 cm
Weight:	990 gr/ml
Abrasion resistance (Martindale):	40.000 rubs (UNI EN ISO 12947/2)
Pilling:	3/4 (UNI EN ISO 12945/2)
Colour fastness to light:	4/5 (UNI EN ISO 105 B02)
Colour fastness to rubbing:	Dry: 3/4, Wet: 3 (UNI EN ISO 105-X12)
Flammability:	BS 5852, CA TB 117
Care:	



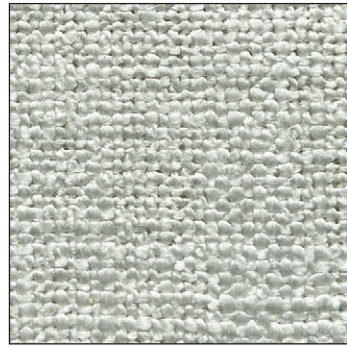
LCP154



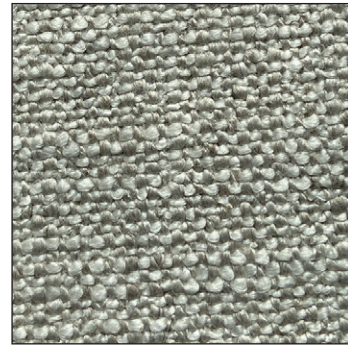
Alba 22 Srl - Società Unipersonale
Via Puja n. 7 - Frazione Maron, 33070 BRUGNERA (PN) - Italy
t. +39 0434 618111 - offices@presotto.com - www.presotto.com

Baltimora

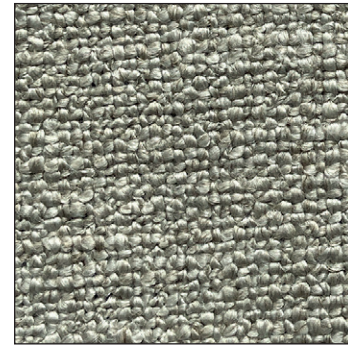
GLAMOUR



L/BALT45



L/BALT10



L/BALT12



L/BALT4



L/BALT27



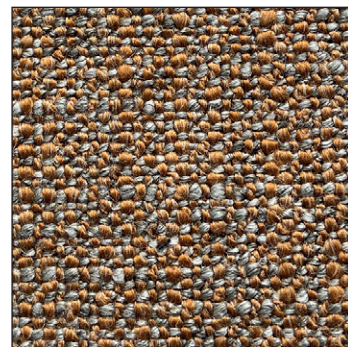
L/BAL28



ENERGY



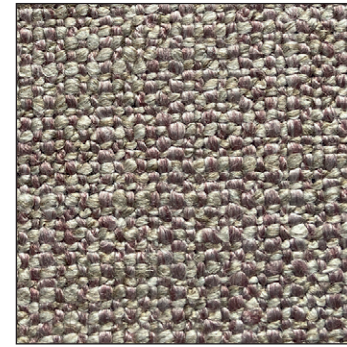
L/BALT32



L/BALT25

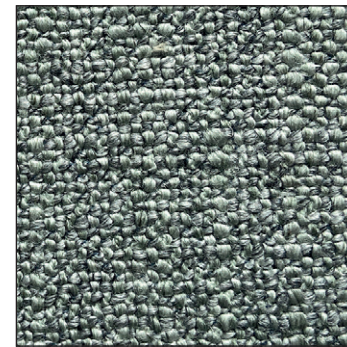
Baltimora

ROMANTIC



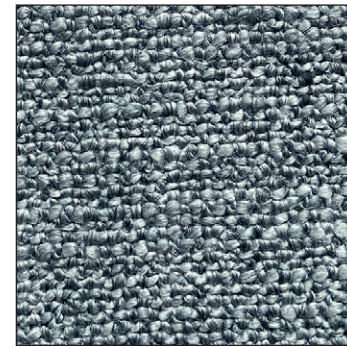
L/BALT15

NATURAL

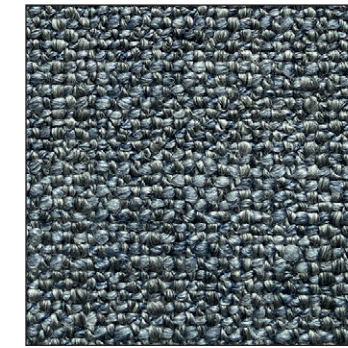


L/BALT17

HARMONY



L/BALT18



L/BALT21



L/BALT30

ELEGANCE



L/BALT22



L/BALT42