

tessuto - fabric

# Planet Enzimi



Resistenza al fuoco - Fire resistance  
USA



100% fibra naturale - 100% natural fiber

## PRESOTTO

**NOME:**  
**CATEGORIA:**

**PLANET ENZIMI**  
**L**

**CARATTERISTICHE TECNICHE:**

Composizione:	100% LI
Altezza:	140 cm +/- 3%
Peso:	640 gr/ml +/- 5%
Resistenza all'abrasione (Martindale):	25.000 cicli (UNI EN ISO 12947/2)
Resistenza al pilling:	3/4 (UNI EN ISO 12945/2)
Solidità dei colori alla luce:	4 (UNI EN ISO 105 B02)
Solidità dei colori allo sfregamento:	3/4 (UNI EN ISO 105-X12)
Omologazioni:	BS 5852-1:1979 CA TB 117:2013

Manutenzione:



**NAME:**  
**CATEGORY:**

**PLANET ENZIMI**  
**L**

**TECHNICAL CHARACTERISTIC:**

Composition:	100% LI
Width:	140 cm +/- 3%
Weight:	640 gr/ml +/- 5%
Abrasion resistance (Martindale):	25.000 rubs (UNI EN ISO 12947/2)
Pilling:	3/4 (UNI EN ISO 12945/2)
Colour fastness to light:	4 (UNI EN ISO 105 B02)
Colour fastness to rubbing:	3/4 (UNI EN ISO 105-X12)
Flammability:	BS 5852-1:1979 CA TB 117:2013

Care:



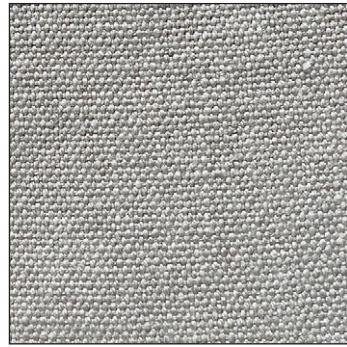
LCP153



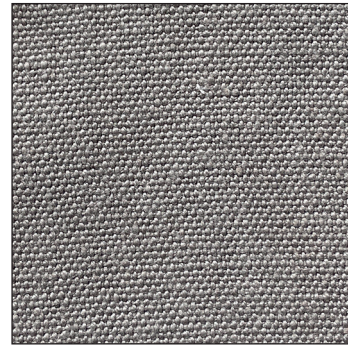
Alba 22 Srl - Società Unipersonale  
Via Puja n. 7 - Frazione Maron, 33070 BRUGNERA (PN) - Italy  
t. +39 0434 618111 - offices@presotto.com - www.presotto.com

Planet enzimi

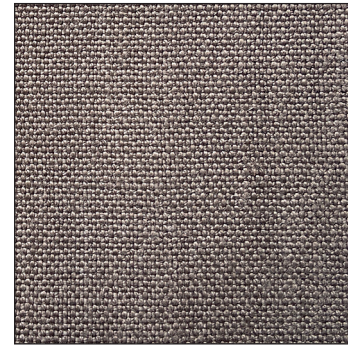
GLAMOUR



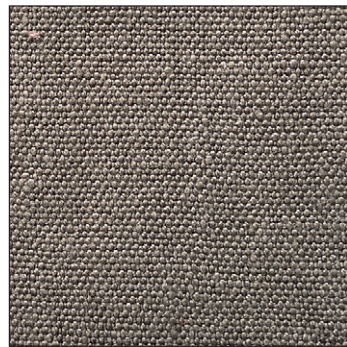
L/PLZ504



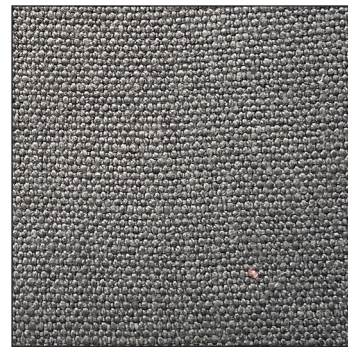
L/PLZ548



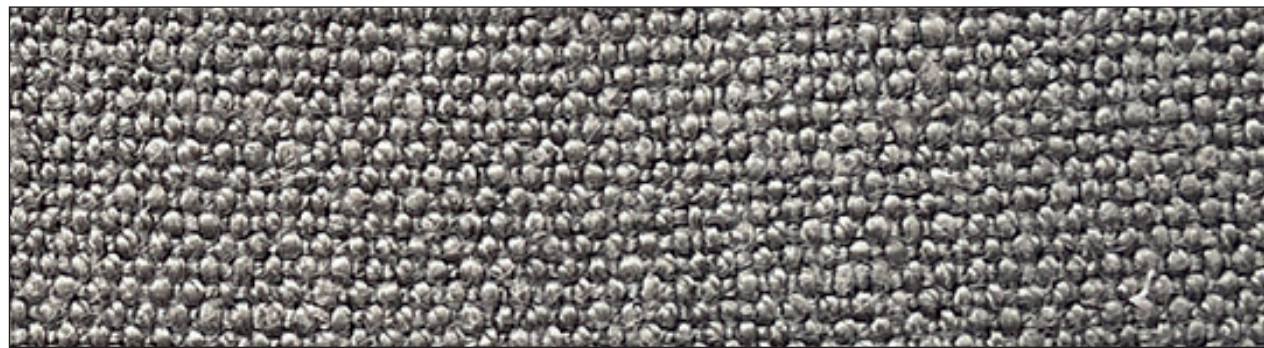
L/PLZ519



L/PLZ506



L/PLZ531



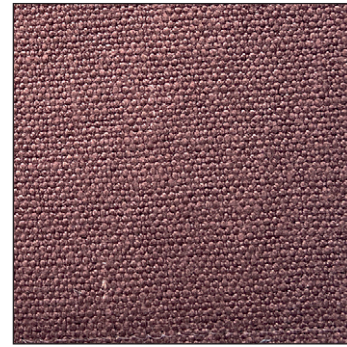
L/PLZ525

ENERGY



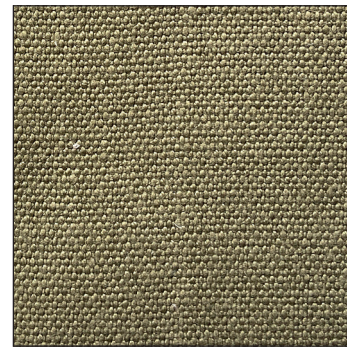
Planet enzimi

ROMANTIC

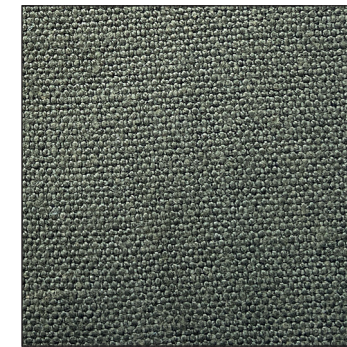


L/PLZ549

NATURAL

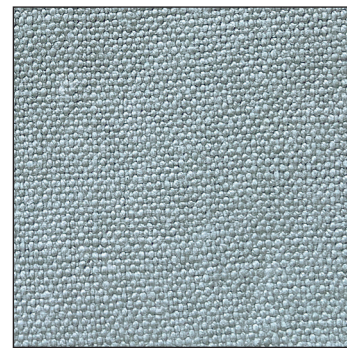


L/PLZ705

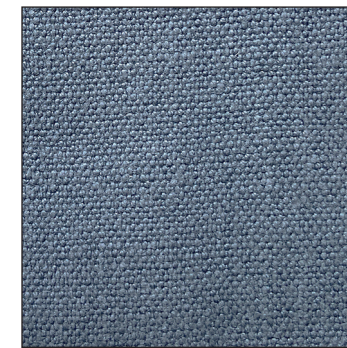


L/PLZ746

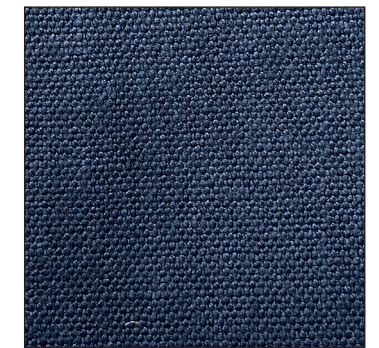
HARMONY



L/PLZ731

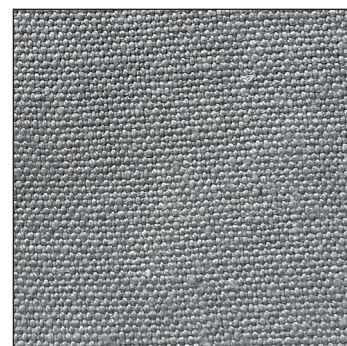


L/PLZ747



L/PLZ750

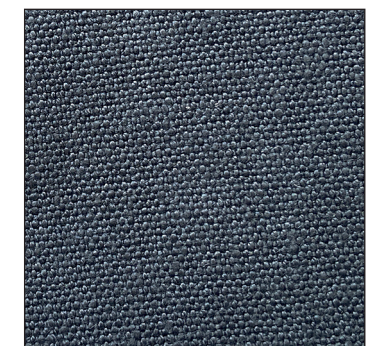
ELEGANCE



L/PLZ534



L/PLZ515



L/PLZ516