

tessuto - fabric

# Vegas

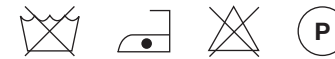
# PRESOTTO

**NOME:**  
**CATEGORIA:**

**VEGAS**  
**L**

**CARATTERISTICHE TECNICHE:**

Composizione:	55% VI, 45% CO
Altezza:	140 cm
Peso:	700 gr/ml
Resistenza all'abrasione (Martindale):	50.000 cicli (UNI EN ISO 12947/2)
Resistenza al pilling:	4 (UNI EN ISO 12945/2)
Solidità dei colori alla luce:	5 (UNI EN ISO 105 B02)
Solidità dei colori allo sfregamento:	Umido: 4, Secco: 4/5 (UNI EN ISO 105-X12)
Manutenzione:	Non usare detersivi che contengono ossidanti o candeggianti ottici

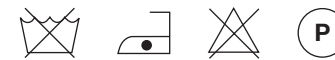


**NAME:**  
**CATEGORY:**

**VEGAS**  
**L**

**TECHNICAL CHARACTERISTIC:**

Composition:	55% VI, 45% CO
Width:	140 cm
Weight:	700 gr/ml +/- 5%
Abrasion resistance (Martindale):	50.000 rubs (UNI EN ISO 12947/2)
Pilling:	4 (UNI EN ISO 12945/2)
Colour fastness to light:	5 (UNI EN ISO 105 B02)
Colour fastness to rubbing:	Wet: 4, Dry: 4/5 (UNI EN ISO 105-X12)
Care:	Do not use detergents containing oxidands or optical bleaches



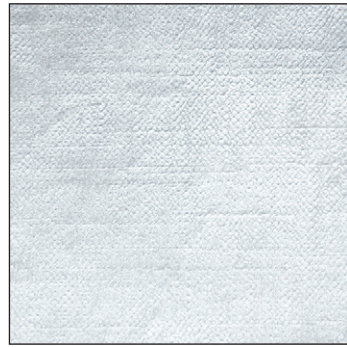
LCP156



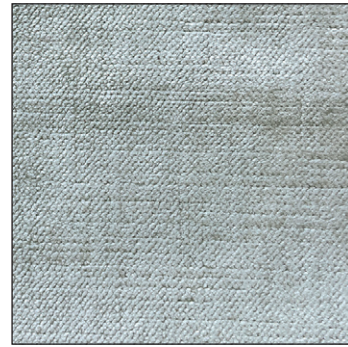
Alba 22 Srl - Società Unipersonale  
Via Puja n. 7 - Frazione Maron, 33070 BRUGNERA (PN) - Italy  
t. +39 0434 618111 - offices@presotto.com - www.presotto.com

# Vegas

GLAMOUR



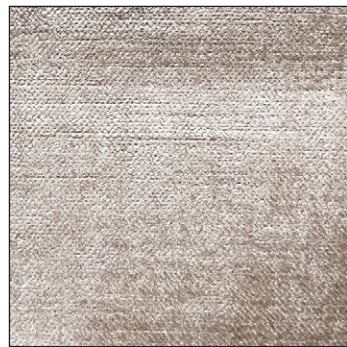
L/VEGAS04



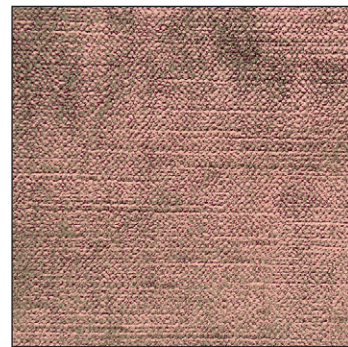
L/VEGAS01



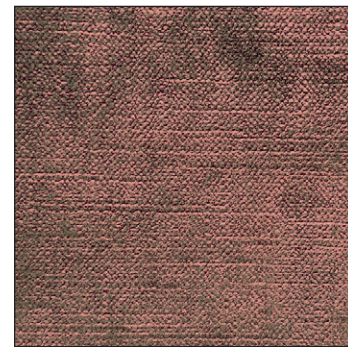
L/VEGAS39



L/VEGAS231



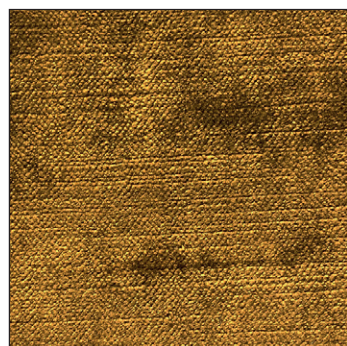
L/VEGAS74



L/VEGAS54



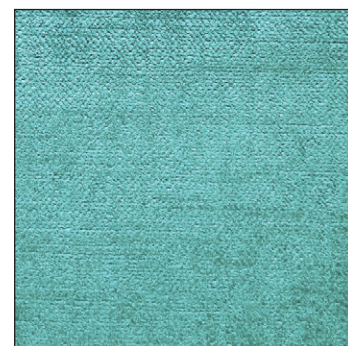
ENERGY



L/VEGAS02



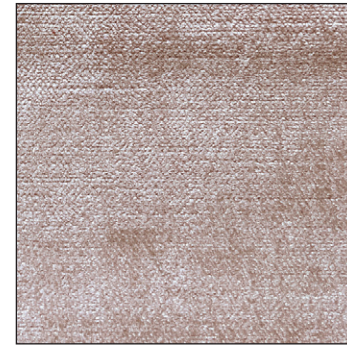
L/VEGAS63



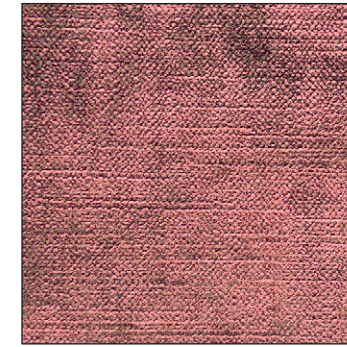
L/VEGAS75

# Vegas

ROMANTIC



L/VEGAS05

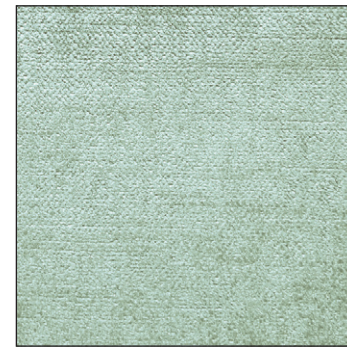


L/VEGAS83



L/VEGAS47

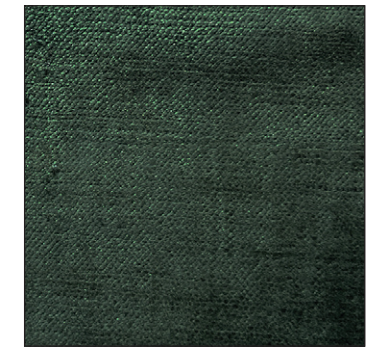
NATURAL



L/VEGA239

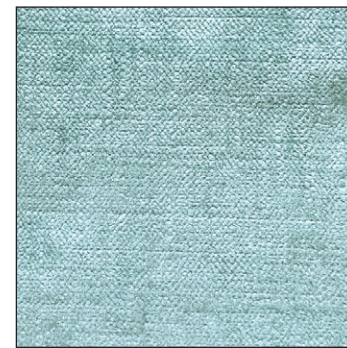


L/VEGA48

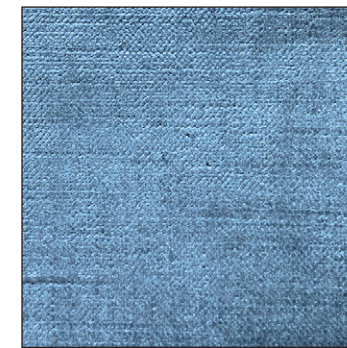


L/VEGAS68

HARMONY



L/VEGAS13

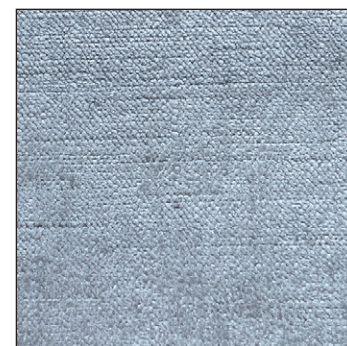


L/VEGAS14



L/VEGAS51

ELEGANCE



L/VEGAS06



L/VEGAS11



L/VEGAS44