

tessuto - fabric

Cloud



Resistenza al fuoco - Fire resistance
USA

PRESOTTO

NOME:
CATEGORIA:

CLOUD
M

CARATTERISTICHE TECNICHE:

Composizione:	61% WV, 32% CO, 7% PA
Altezza:	140 cm
Peso:	1200 gr/ml
Resistenza all'abrasione (Martindale):	25.000 cicli (UNI EN ISO 12947/2)
Resistenza al pilling:	4/5 (UNI EN ISO 12945/2)
Solidità dei colori alla luce:	4 (UNI EN ISO 105 B02)
Variazione lavaggio a secco:	-1,8% trama, -2% ordito
Omologazioni:	CA TB 117:2013
Manutenzione:	



NAME:
CATEGORY:

CLOUD
M

TECHNICAL CHARACTERISTIC:

Composition:	61% WV, 32% CO, 7% PA
Width:	140 cm
Weight:	1200 gr/ml
Abrasion resistance (Martindale):	25.000 rubs (UNI EN ISO 12947/2)
Pilling:	4/5 (UNI EN ISO 12945/2)
Colour fastness to light:	4 (UNI EN ISO 105 B02)
Dimensional change to dry cleaning:	-1,8% welf, -2% warp
Flammability:	CA TB 117:2013
Care:	



LCP158



Alba 22 Srl - Società Unipersonale
Via Puja n. 7 - Frazione Maron, 33070 BRUGNERA (PN) - Italy
t. +39 0434 618111 - offices@presotto.com - www.presotto.com

Cloud

GLAMOUR



M/CLD2800



M/CLD2804



M/CLD2803



M/CLD2805



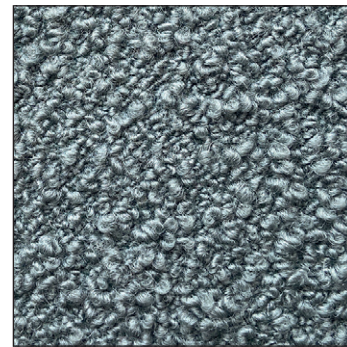
Cloud

ROMANTIC



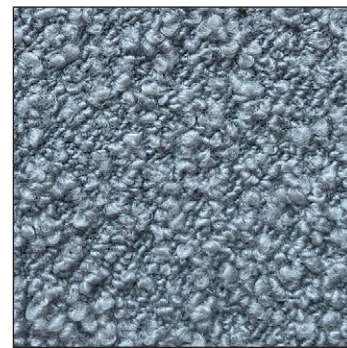
M/CLD2809

NATURAL

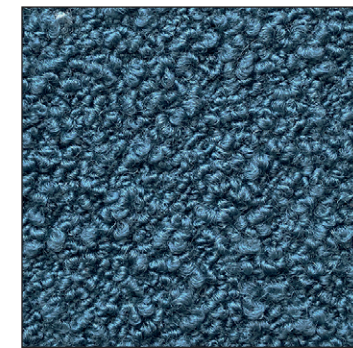


M/CLD2819

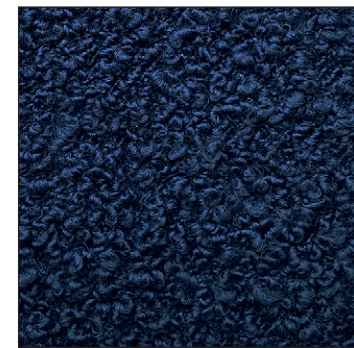
HARMONY



M/CLD2820



M/CLD2818

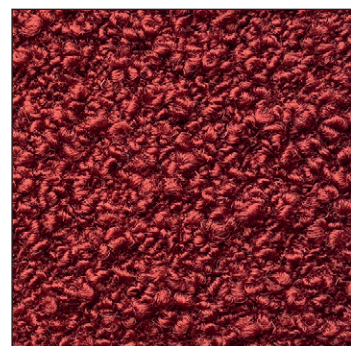


M/CLD2821

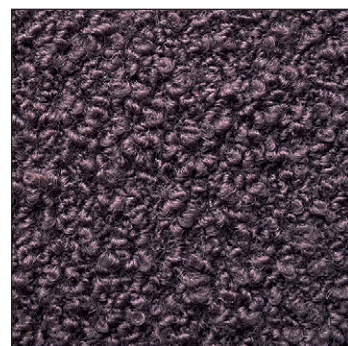
ENERGY



M/CLD2806



M/CLD2808



M/CLD2811

ELEGANCE



M/CLD2802



M/CLD2814



M/CLD2813