

pelle - leather

Nabuk



Resistenza al fuoco - Fire resistance
UK, USA

PRESOTTO

NOME: NABUK

CATEGORIA: PELLE SUPER

CARATTERISTICHE TECNICHE:

Pelle pieno fiore, grana fine, nabuccato.

Provenienza Materia Prima:

Pelli di provenienza europea con taglia media prevalentemente intorno a 5 mq.

Concia:

Al cromo.

Tintura:

In botte con coloranti all'anilina.

Spessore:

1.2 - 1.4 mm

Omologazioni:

BS5852, CA TB 117

NAME: NABUK

CATEGORY: SUPER LEATHER

TECHNICAL CHARACTERISTIC:

Leather in full grain, fine-grained, nabuck leather.

Provenance of Raw Material:

Leather of European origin with an average size of approximately 5 mq.

Tanning:

Chrome tanning.

Dyeing:

In drums with aniline dyestuffs.

Thickness:

1.2 - 1.4 mm

Flammability:

BS5852, CA TB 117

CP165



Alba 22 Srl - Società Unipersonale
Via Puja n. 7 - Frazione Maron, 33070 BRUGNERA (PN) - Italy
t. +39 0434 618111 - offices@presotto.com - www.presotto.com

Nabuk

GLAMOUR



SUP/NBK SABBIA



SUP/NBK SEPPIA



SUP/NBK MARRONE



SUP/NBK TERRA



SUP/NBK MARRONE SCURO



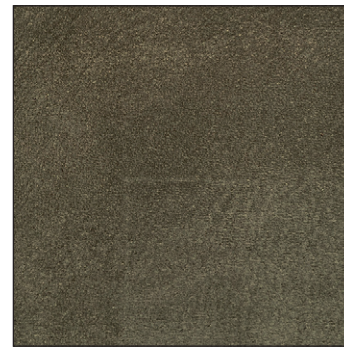
Nabuk

ROMANTIC



SUP/NBK BORDEAUX

NATURAL

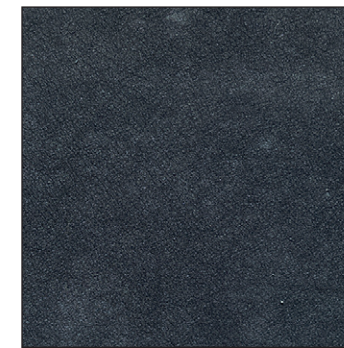


SUP/NBK SALVIA

HARMONY



SUP/NBK ORIONE



SUP/NBK OCEANO

ELEGANCE



SUP/NBK GRIGIO PERLA



SUP/NBK MASTICE



SUP/NBK ANTRACITE