

tessuto - fabric

Lanzarote

PRESOTTO

NOME:
CATEGORIA:

LANZAROTE
B

CARATTERISTICHE TECNICHE:

Composizione: 90% PL, 10% PC
Altezza: 140 cm
Peso: 560 gr/ml
Resistenza all'abrasione (Martindale): 60.000 cicli (UNI EN ISO 12947/2)
Resistenza al pilling: 4 (UNI EN ISO 12945/2)
Solidità dei colori alla luce: 4 (UNI EN ISO 105 B02)
Manutenzione:



NAME:
CATEGORY:

LANZAROTE
B

TECHNICAL CHARACTERISTIC:

Composition: 90% PL, 10% PC
Width: 140 cm
Weight: 560 gr/ml
Abrasion resistance (Martindale): 60.000 cicli (UNI EN ISO 12947/2)
Pilling: 4 (UNI EN ISO 12945/2)
Colour fastness to light: 4 (UNI EN ISO 105 B02)
Care:



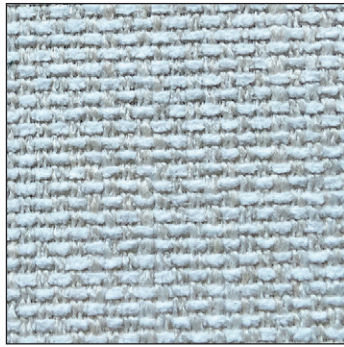
LCP132



Alba 22 Srl - Società Unipersonale
Via Puja n. 7 - Frazione Maron, 33070 BRUGNERA (PN) - Italy
t. +39 0434 618111 - offices@presotto.com - www.presotto.com

Lanzarote

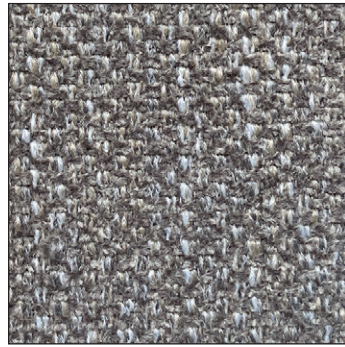
GLAMOUR



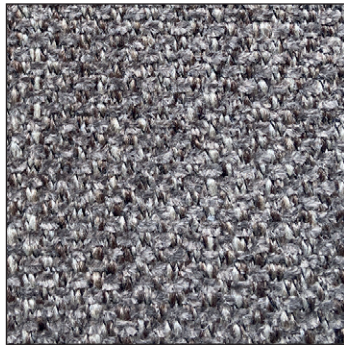
B/LNZ200



B/LNZ01



F/B/LNZ05



B/LNZ622



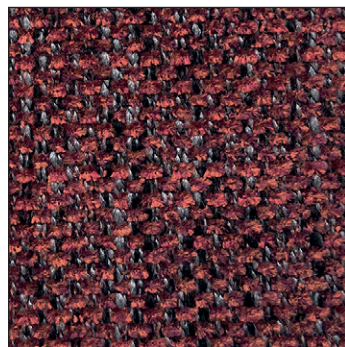
ENERGY



B/LNZ03



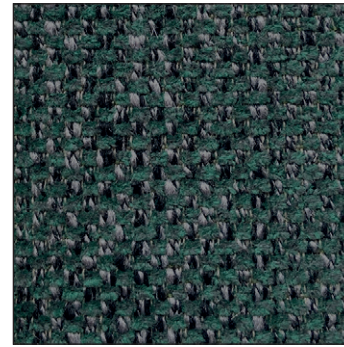
B/LNZ102



B/LNZ80

Lanzarote

NATURAL

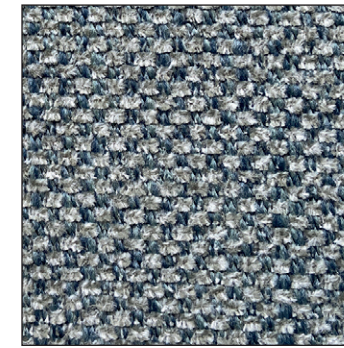


B/LNZ13

HARMONY

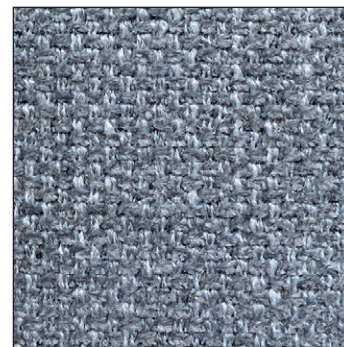


B/LNZ02

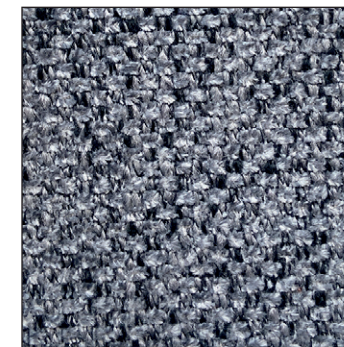


B/LNZ616

ELEGANCE



B/LNZ17



B/LNZ205