

tessuto - fabric

# Orsetto

# PRESOTTO

**NOME:**  
**CATEGORIA:**

**ORSETTO**  
**B**

**CARATTERISTICHE TECNICHE:**

Composizione:	95% PL, 5% PC
Altezza:	140 cm
Peso:	840 gr/ml
Resistenza all'abrasione (Martindale):	100.000 cicli (UNI EN ISO 12947/2)
Resistenza al pilling:	4 (UNI EN ISO 12945/2)
Solidità dei colori alla luce:	4 (UNI EN ISO 105 B02)
Manutenzione:	



**NAME:**  
**CATEGORY:**

**ORSETTO**  
**B**

**TECHNICAL CHARACTERISTIC:**

Composition:	95% PL, 5% PC
Width:	140 cm
Weight:	840 gr/ml
Abrasion resistance (Martindale):	100.000 cicli (UNI EN ISO 12947/2)
Pilling:	4 (UNI EN ISO 12945/2)
Colour fastness to light:	4 (UNI EN ISO 105 B02)
Care:	



LCP131



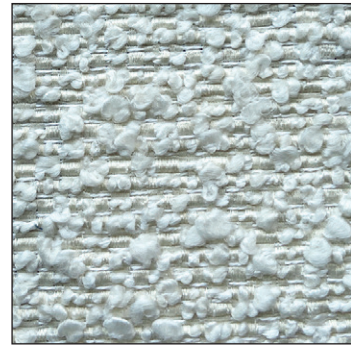
Alba 22 Srl - Società Unipersonale  
Via Puja n. 7 - Frazione Maron, 33070 BRUGNERA (PN) - Italy  
t. +39 0434 618111 - offices@presotto.com - www.presotto.com

Orsetto

GLAMOUR



B/ORS20



B/ORS01



B/ORS02



B/ORS19



B/ORS622



B/ORS800



Orsetto

ROMANTIC



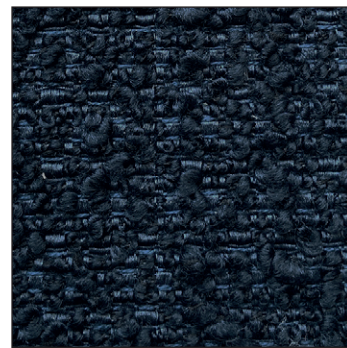
B/ORS615

NATURAL



B/ORS13

HARMONY

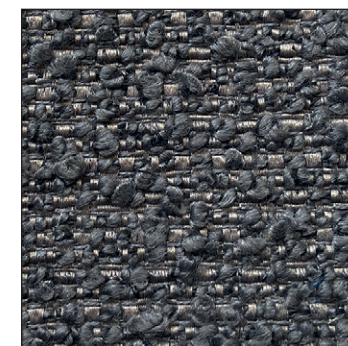


B/ORS14

ELEGANCE



B/ORS616



B/ORS205



B/ORS18